

*Longbourne Lodge...*

*It's just a little different...*



*A warm welcome  
from your hosts,  
Shen and Hania*

# *Contents*

Page No.	
4	About Longbourne Lodge
8	Barbecue
7	Breakages and mishaps
5	Checking out time
9	Chemist
9	Churches
6	Cleaning and servicing of the cottages
9	Dentist
9	Dry-cleaning
5	Electric fences
10	Fast food and takeaways - list of local places
5	Fire and other emergencies
7	Heating
8	Indoor board games
6	Internet
7	Laundry
9	Medical services
5	Office hours
8	Outdoor activities
6	Pets and dog walking area
9	Police
10	Restaurants – list of local eating places
3	Site map
6	Smoking in and around the lodge
9	Supermarkets
8	Supplies available from the office
9	Taxis
6	Telephones and toll calls
11	Television Channels
5	Toilets – the reality of staying in the country
9	Vet

# Site Map – Longbourne Lodge



## *About Longbourne Lodge*

*Longbourne Lodge* opened in February 2008. Set on five acres in North Taieri, Mosgiel, the lodge embraces the benefits of both country and town environments. With this in mind, the Lodge and daily operation has been designed to encompass the convenience of modern town living, and the peaceful lifestyle of rural New Zealand.

Many conservational and sustainability principals have been incorporated into the design.

- ✿ The cottages and lodge house were constructed by *Eco-Panels*, a company committed to building using renewable resources. The cottages have been designed along as many passive solar principles as possible.
- ✿ The potable (drinkable) water is fresh rainwater, pumped through Carbon and Ultra-violet filters to remove any contaminants and bacteria.
- ✿ There is an on-site waste-water system and water from the laundry is used for irrigating the trees and gardens.
- ✿ Solar panels on the roofs maintain a steady supply of hot water.
- ✿ Double glazing keeps the cottages warm in winter, cool in summer, and the insect/security screens allow the cottages and studios to cool naturally without having to tolerate the flies and insects that abound in a rural area.
- ✿ Linens are air-dried whenever nature allows.

The landscaping and gardens are an on-going “work in progress”. Please be aware that from time to time our maintenance team will be working in the gardens with equipment and supervise your children accordingly.

We hope you enjoy your stay. If you have any special requests, please do not hesitate to ask and we will endeavour to accommodate them.

***Office hours are from 8.00 am to 8.00 pm.***

If assistance is required outside of these hours, a doorbell is located on the reception ranch-slider door. For all emergencies, dial 1 for an outside line and dial 111 from the telephone in your cottage to access the Police, Fire and Ambulance Services.

***Checking out time is 10.00 am.***

If you need to check out earlier than 8.00 am, please advise us of this and settle your account the evening before. There is a dropbox for keys located near the entrance to reception.

If you wish to check out later than 10.00 am, please advise us the day prior to your leaving and we will try to accommodate your request where possible.

***In the event of a fire*** please call the emergency service (dial 1 for an outside line, and then dial 111). Evacuate your cottage immediately and assemble on the tarmac path in the centre garden to ensure all people are accounted for.

A fire extinguisher is located in your cottage in the event of a minor fire. If you feel safe extinguishing the fire, please do so and advise the office immediately the fire is contained.

Smoke alarms are installed in each cottage. There is a button alongside the fuse box in the lounge you can push which will silence the smoke alarm in the event of over-enthusiasm when applying heat to food during culinary attempts. The alarm also sounds in the office so we will be aware of the situation.

***Life threatening accidents*** should be dealt with by you calling the emergency services first (dial 1 for an outside line, and then dial 111). Please then advise the office of the emergency.

***The Waste-water system*** will be blocked by any unnatural products. This includes feminine hygiene products, babies' nappies, wet wipes, and condoms. Please use the bags provided in the toiletries box, and place in the small rubbish bin in your bathroom. Please avoid putting chemicals, cooking oils and fats down any sink or drain. If in doubt, please ask.

***Electric fences*** are sometimes “live” on the perimeter fences. As they are controlled by the neighbouring properties and we have no idea when they are turned on or off, it is best to assume all perimeter fences are live. If you have young children with you, please supervise them accordingly.

***Cleaning of the cottages*** takes place between each guest’s stay. Your room will be re-provisioned with tea, coffee etc. each day of your visit, and a brief clean and rubbish removal will be done at this time. If you would like to help with conservation, please hang up your towels on the hooks if they do not need replacing. If you would like your towels replaced, please leave them on the floor of the bathroom. Towels and bed linens are changed every fourth day of your stay, upon request.

Extra charges may be levied on your account should your cottage require additional cleaning or special treatments, i.e., dishes being washed, carpet steam cleaning or other specialist sanitising treatments.

Please help us to recycle by leaving your empty plastic and glass bottles alongside your rubbish bin.

***Telephones*** are located in the main bedroom. To contact reception, please dial zero (0).

To obtain an outside line, dial 1. There is no charge for local calls. A toll bar from each cottage is in operation, however national calls can be made from a handheld telephone obtainable from Reception, or by asking for the call to be made and transferred to your cottage.

***Internet*** is provided at no charge. The internet connection to use is “Guest Wi-Fi” and the password is shown alongside the sitemap on the wall of your unit.

***Please do not smoke in the cottages.*** You will find a flowerpot filled with sand outside your cottage for cigarette butts. As the Tairei can be a very dry and windy place, please do not throw your butts in the gardens or on the grass, as they can ignite the surrounding area very quickly in these conditions.

***Dogs are welcome*** at Longbourne Lodge provided we have advance warning of them arriving with you, and you clean up after them. Please advise us if you wish to have your pet sleep in the cottage with you. Dogs may not be left unattended in the cottage;

if you leave your cottage, your dog must go with you. We do have a pet stay tariff which goes towards covering the additional cleaning and the upkeep in Willow Meadow.

There is an on-site dog exercise area (Willow Meadow) where your dogs can run around without a lead. This is located through the wooden gate off the entrance driveway, behind cottage 2. This is the only area on-site you may walk your dog, and we ask that you be respectful of the other guests on site and ensure you keep your dog on the leash on your way to and from Willow Meadow.

Pooper-scooper bags are available at the office and used bags should be placed in the black bin (looks like a letter box) which can be found by the steps in the dog exercise area.

Please do not use the cottage towels for drying your pets. We have a supply of old clean towels for this purpose. Should you need food or drinking bowls, mats, or need to wash your dog, please ask at the office.

Please do not allow your dog on the furniture.

***Little mishaps and accidents*** do happen – that's life! But if you do have a spill or break something in your cottage or on the property, please do advise us as it is easier for us to deal with the problem at the time.

***Guest laundry facilities*** are located beside Garden Studio 5 and include a tub, top-loading washing machine, and a tumble drier. For safety reasons, the laundry is kept locked. Should you wish to use the laundry, please come to reception for the key. Please only use the laundry powder provided by Longbourne Lodge as not all laundry detergents are suitable for use with our wastewater system.

The machines are not coin operated and payment for use of the laundry is made at reception. A fold away clothes horse / airing frame is available for use. If you borrow it from the laundry to use at your unit, please return to the laundry when you have finished. We would appreciate it if you dried your laundry outside on the deck and not in your unit.

***Heating is standalone within your unit i.e., no ventilation is shared between units,*** and varies between unit types. Each unit is positioned on the land to be north facing and passively solar heated. Additional heating by way of either heat pumps, wall fan heaters and wall panel heaters is also provided.

In each unit, instructions for the heating are on the wall by the heater control.

**Family Cottages:** The switch to turn the heat pump on is located by the door to the carport.

**One Bedroom Cosy Cottages:** The remote control for the wall fan heater is located by the door to the carport. If the heating does not come on, ensure the stove and extractor vent are turned on at the wall. To turn off, please only use the remote control; do not turn the power off at the wall as this will crack the ceramic in the heater and the heater will have to be replaced.

**Garden Studios:** The switch to turn the wall fan heater on is located above the panel heater by the bed. The temperature setting is controlled by the dial on the actual heater.

***Outdoor activities*** on site include petanque, chess, chequers, volleyball, and badminton. The swing and basketball hoop are located towards the back of the property and the chess pieces, balls etc. can be found in the green toy box by the chess board. Please do supervise your children and return any games back into the toy box tidily for your fellow guests' convenience. Please ask at the office for the Petanque balls.

***Indoor Board Games***, children's colouring books and jigsaws are available for those not-so-fine days. Please ask at the office.

***The Barbecue*** is available for guests. Being portable, this can be located near your cottage, or around the gardens. The cooking utensils are located at the office. Please consider the guests who will be using the barbecue after you and clean the barbecue once you have finished with it.

***Basic Supplies*** you may have forgotten such as toothpaste and brush, razors, feminine hygiene products and sewing kits are available at the office.



***Local Services*** you may require are listed below:

***Dry-cleaning***

Preens Dry Cleaning Agent  
Apt Collections ph 03 2606981  
124 Gordon Road

Caroline Eve ph 4897195  
150 Gordon Road

***Doctor***

Mosgiel Medical Centre  
21 Inglis Street ph 489 5135

Dunedin Urgent Doctor & Accident Centre ph 479 2900  
18 Filleul Street

***Dentist***

Lumino  
184 Gordon Road ph 489 7040

***Police***

For Emergencies ph 111  
Local Station 1 Cargill St Mosgiel  
Ph 489 3534

***Taxis***

Otago Cabs Dunedin ph 022 099 8516  
Dunedin Taxis ph 477 7777

***Vet***

Murray's Vet Clinic  
10 Dukes Road South ph 489 5540

***Chemist***

Unichem Central Pharmacy Mosgiel  
130 Gordon Road ph 489 6141

***Churches***

Mosgiel Presbyterian Church  
11 Church Street

Mosgiel Roman Catholic Immaculate Conception Church  
47 Church Street

Mosgiel Methodist Church  
61 Gordon Road

Mosgiel St Luke's Anglican Church  
67 Gordon Road

***Supermarkets***

New World  
10 Hartstonge Ave

Countdown  
55 Gordon Road

## ***Dining Out in Mosgiel***

***Restaurants in Mosgiel*** are well known for their fine meals and friendly service. If you do not feel like dining out, they are generally happy for you to place an order and the meal can be picked up when ready. Below is a small range of the options in Mosgiel.

<b>Venue Type</b>	<b>Name and Address</b>	<b>Contact Details</b>
Restaurant	The Black Sheep Restaurant and Bar 26 Factory Road	Ph: 489 7777
Restaurant	Nellies Restaurant & Bar 6 Gordon Road	Ph: 489 5062 <a href="http://www.hoteltaieri.co.nz">www.hoteltaieri.co.nz</a>
Restaurant	Kade's Restaurant Mosgiel Tavern 150 Factory Road	Ph: 489 4402
Restaurant	RSA Spitfire Restaurant and Diggers Tavern 6 Church Street	Ph: 489 7182 <a href="http://Mosgielrsa.co.nz">Mosgielrsa.co.nz</a>
Eat in & Take-away	Turkish Kitchen 104 Gordon Road	Ph: 0800 489 0900 <a href="http://Turkishkitchenmosgiel.co.nz">Turkishkitchenmosgiel.co.nz</a>
Eat in & Take-away	Black Pepper 6 Factory Road <i>Will deliver</i>	Ph: 972 7810 <a href="http://Blackpepperindianrestaurant.co.nz">Blackpepperindianrestaurant.co.nz</a>
Café	Blackstone Café & Bar 134 Gordon Road	Ph: 489 1299 <a href="http://www.blackstonecafe.co.nz">www.blackstonecafe.co.nz</a>
Café	Topiary Café at Wal's Plantland 109 Bush Road	Ph: 489 1990 <a href="http://Walsplantland.co.nz">Walsplantland.co.nz</a>
Café	Aurora Café 123 Gordon Road	Ph: 489 5049
Take-away	The Sushi Shop 100B Gordon Road	Ph: 489 6633 <a href="http://Thesushishopmosgiel.co.nz">Thesushishopmosgiel.co.nz</a>
Take-away	Nola's Take-away 100 Gordon Road	Ph: 489 5436
Take-away	Domino's Pizza 100 Gordon Road <i>Will deliver</i>	Ph: 425 0969
Eat in & Take-away	Subway 125B Gordon Road <i>Use phone app for delivery</i>	Ph: 489 7667
Eat in & Take-away	Krishna Take-away 168A Gordon Road	Ph: 028 470 9885
Eat in & Take-away	ReBurger 3 Factory Road	Ph: 489 4844 <a href="http://Reburger.co.nz">Reburger.co.nz</a>

# SKY GUEST SELECT CHANNEL GUIDE

## SKY GUEST SELECT 50+ CHANNELS

<b>PREVIEW</b> Channel 000 & 028	<b>ONE</b> Channel 001	<b>2</b> Channel 002	<b>3</b> Channel 003	<b>PRIME</b> Channel 004	<b>5</b> Channel 005	<b>vibe</b> Channel 006	<b>BBC UKTV</b> Channel 007
<b>Living</b> Channel 008	<b>Food</b> Channel 009	<b>E</b> Channel 011	<b>FOUR</b> Channel 012	<b>JONES</b> Channel 013	<b>MTV</b> Channel 014	<b>COMEDY CENTRAL</b> Channel 015	<b>Z THE ZONE</b> Channel 016 <small>Available from 30 November 2014</small>
<b>HEART</b> Channel 017	<b>The Shopping Channel</b> Channel 018	<b>MĀORI TELEVISION</b> Channel 019	<b>YESRUP</b> Channel 023	<b>TVS</b> Channel 024	<b>travel</b> Channel 025	<b>Choice</b> Channel 026	<b>MOVIES PREMIERE</b> Channel 030
<b>MOVIES EXTRA</b> Channel 031	<b>MOVIES GREATS</b> Channel 032	<b>MOVIES CLASSICS</b> Channel 033	<b>MOVIES ACTION</b> Channel 034	<b>TCM</b> Channel 038	<b>skysport MOSAIC</b> Channel 050	<b>skysport 1</b> Channel 051	<b>skysport 2</b> Channel 052
<b>skysport 3</b> Channel 053	<b>skysport 4</b> Channel 054	<b>ESPN</b> Channel 060	<b>ESPN 2</b> Channel 061	<b>1 trackside</b> Channel 062	<b>2 trackside</b> Channel 063	<b>SOMMET SPORTS</b> Channel 069	<b>Discovery CHANNEL</b> Channel 070
<b>ci crime + investigation</b> Channel 071	<b>NATIONAL GEOGRAPHIC CHANNEL</b> Channel 072	<b>HISTORY</b> Channel 073	<b>Knowledge</b> Channel 074	<b>ANIMAL PLANET</b> Channel 075	<b>TE REO</b> Channel 082	<b>FACE TELEVISION</b> Channel 083	<b>sky NEWS NEW ZEALAND</b> Channel 085
<b>Parliament TV</b> Channel 086	<b>CNN</b> Channel 087	<b>FOX NEWS</b> Channel 088	<b>BBC WORLD NEWS</b> Channel 089	<b>ALJAZEERA</b> Channel 090	<b>CNBC</b> Channel 091	<b>RT</b> Channel 092	<b>Disney CHANNEL</b> Channel 100
<b>nick</b> Channel 101	<b>CN CARTOON NETWORK</b> Channel 102	<b>nick jr.</b> Channel 104	<b>Disney Junior</b> Channel 105	<b>kidzone 24</b> Channel 106	<b>MTV HITS</b> Channel 110	<b>MTV CLASSIC</b> Channel 111	<b>Just</b> Channel 112
<b>J2 MUSIC.TV</b> Channel 113	<b>THE EDGE</b> Channel 114	<b>CUE</b> Channel 200	<b>ShineTV</b> Channel 201	<b>DAYSTAR</b> Channel 202	<b>SBN</b> Channel 203	<b>CCTV NEWS</b> Channel 310	<b>058 壹电视</b> Channel 311
<b>036 新超凡</b> Channel 312	<b>FM 104.2</b> Channel 313	<b>THE EDGE</b> Channel 420	<b>RADIO NEW ZEALAND NATIONAL</b> Channel 421	<b>RADIO NEW ZEALAND CONCERT</b> Channel 422	<b>tahua</b> Channel 423	<b>RADIO</b> Channel 424	<b>ONE PLUS 1</b> Channel 501
<b>2</b> Channel 502	<b>3</b> Channel 503	<b>4</b> Channel 512					

To find other motels with Guest Select 50+ please visit [www.guestselect.co.nz](http://www.guestselect.co.nz)

## Accommodation options at Longbourne Lodge

*Longbourne Lodge offers a variety of room options. Whether you are travelling solo, with the family or in a group, Longbourne will have an option to suit.*

*Bedding configurations can be changed to suit your requirements.*



**Two Bedroom Family  
Cottage** (Accommodates up  
to 7 people)



**Garden Studio**

(Accommodates up to 3 people  
or 2 adults and 2 small children)



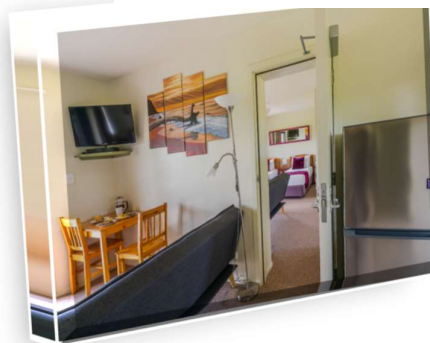
**Cosy Cottage**

(Accommodates up to 3 people  
or 2 adults and 2 small children)



**Garden Studio Twin**

(Accommodates up to 3 people  
or 2 adults and 2 small children)



**Family Garden Studio**

(Accommodates up to 6  
people)

## Places to Visit

We have brochures in our reception of various places of interest to visit in Dunedin. Please come and have a browse.

Alternatively you may find the A – Z Dunedin City Guide e-book a useful tool to help you discover some interesting and scenic places to visit. Access the guide on the following address: [www.dunedinnz.com](http://www.dunedinnz.com)